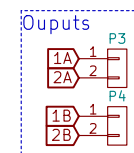
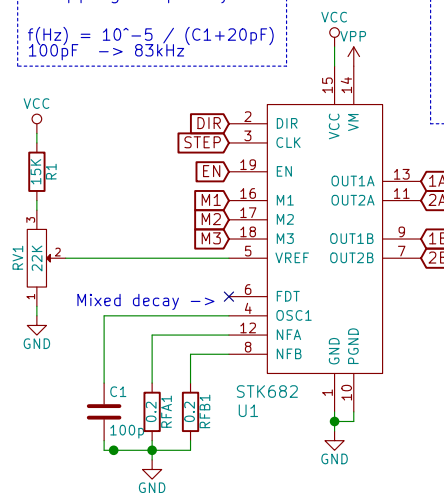
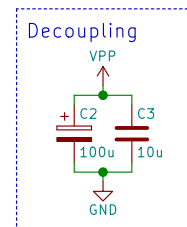


$$I_{out(A)} = V_{REF} / (5 * R_{FA})$$
$$I_{out(B)} = V_{REF} / (5 * R_{FB})$$

Chopping frequency

$$f(Hz) = 10^{-5} / (C1 + 20pF)$$
$$100pF \rightarrow 83kHz$$



electrolab

Sheet: /

File: stepping-stk682.sch

Title: stepperDriver stk682

Size: A4

Date:

KiCad E.D.A. kicad 4.0.2+e4-622538ubuntu14.04.1-stable

Rev: 1.0

Id: 1/1